

46/50

BARCLAY SQUARE

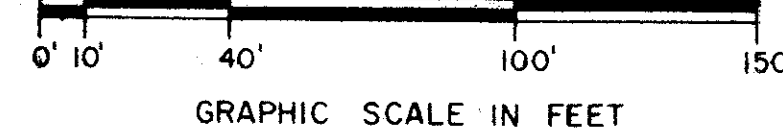
BEING A REPLAT OF A PORTION OF TRACT 1 OF THE NORTHWEST 1/4 OF SECTION 36, TOWNSHIP 44 SOUTH, RANGE 42 EAST AS RECORDED IN PLAT BOOK 3, PAGE 10 OF THE PUBLIC RECORDS OF PALM BEACH COUNTY, FLORIDA

MICHAEL B. SCHORAH & ASSOCIATES, INC.
CONSULTING ENGINEERS & PLANNERS

SHEET TWO of TWO SHEETS

50

STATE OF FLORIDA
COUNTY OF PALM BEACH
This Plat was filed for record at
M. this day of 19
and duly recorded in Plat Book No.
on Page
John B. Dunkle, Clerk Circuit Court
By D.C.



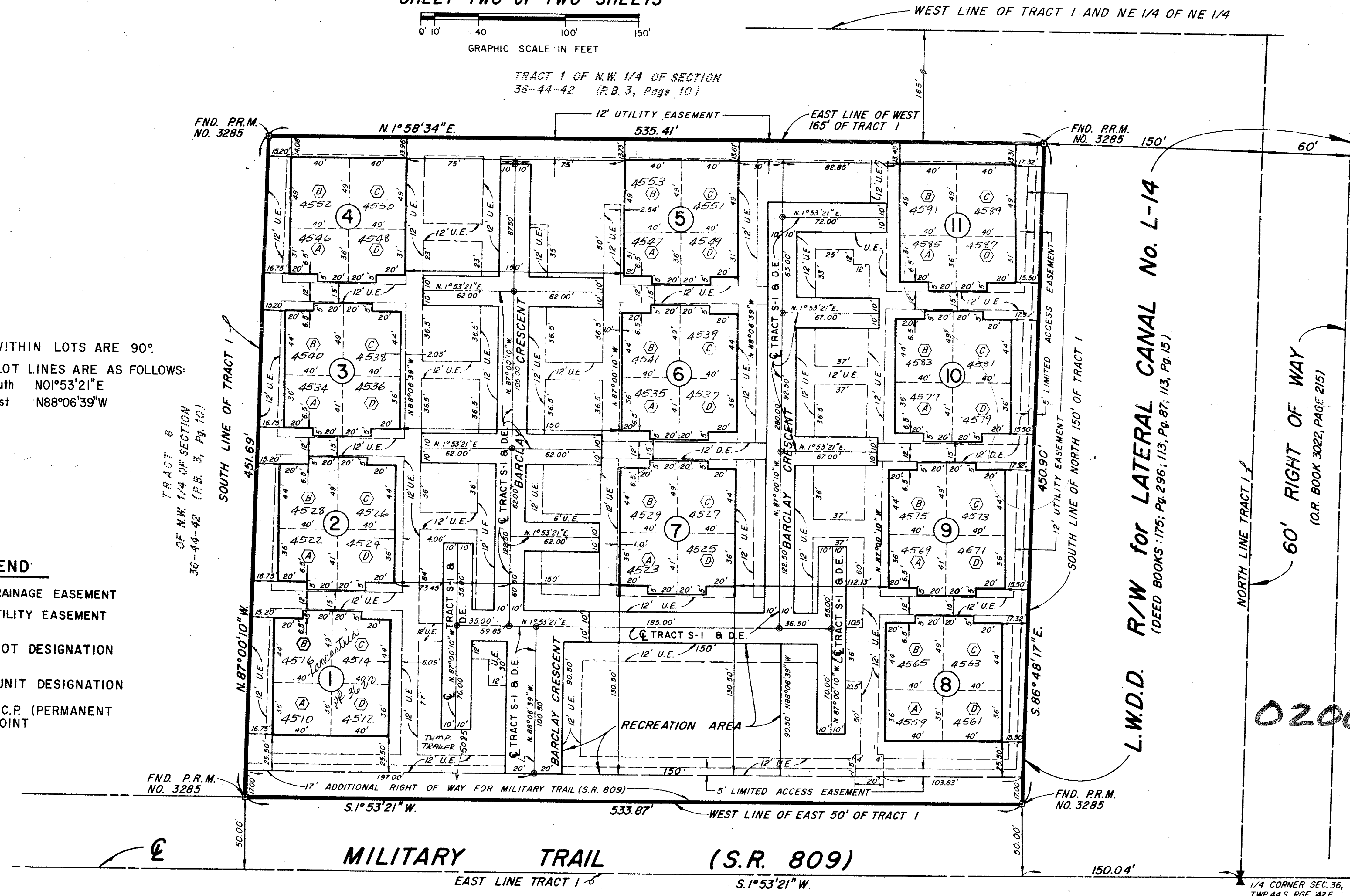
TRACT 1 OF N.W. 1/4 OF SECTION 36-44-42 (P.B. 3, Page 10)

NOTE

- ALL ANGLES WITHIN LOTS ARE 90°
- BEARINGS ON LOT LINES ARE AS FOLLOWS:
 1. North-South N01°53'21"E
 2. East-West N88°06'39"W

LEGEND

- D.E. DENOTES DRAINAGE EASEMENT
- U.E. DENOTES UTILITY EASEMENT
- ⑥ DENOTES LOT DESIGNATION
- ⊙ DENOTES UNIT DESIGNATION
- ⊙ DENOTES P.C.P. (PERMANENT CONTROL POINT)



L.W.D.D. R/W for LATERAL CANAL No. L-14
(DEED BOOKS: 175; Pg. 296; 113, Pg. 87; 113, Pg. 15)

60' RIGHT OF WAY
(O.R. BOOK 3022, PAGE 215)

0200-000

SUBDIVISION	BARCLAY SQUARE
BOOK	90
PAGE	50
FLOOD ZONE	B
QUAD	33
SE	
PUD NAME	
FLOOD MAP	4758
ZONING	
ZIP CODE	33443

46/50
BARCLAY SQUARE

MICHAEL B. SCHORAH & ASSOCIATES, INC.
ENGINEERS
PLANNERS
DEVELOPMENT CONSULTANTS
1850 FOREST HILL BLVD.
SUITE 205
WEST PALM BEACH,
FLORIDA 33406
PHONE: (305) 968-0080